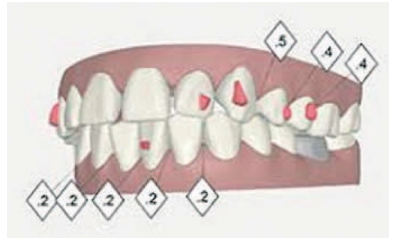


Interproximal Reduction (IPR)

IPR is the process of removing minimal amounts of enamel from certain teeth using fine diamond impregnated strips between the teeth. This enables teeth to move more freely into their desired position, IPR will not increase the chances of sensitivity or weaken the teeth, it is a safe and reliable method used by Invisalign and specialist orthodontists.

It may (in some cases) be used instead of extracting healthy teeth. In cases where teeth are less crowded, IPR may not be part of treatment however the specialist orthodontist will assess the need for IPR at your appointment.



This is an example of an Invisalign ClinCheck, the numbers in the diamond shows the amount of IPR which is needed between those teeth. ".4" means **0.4 of a millimetre**, not 4 millimetres. It is a tiny amount.

drfrancisbraces

Dr Francis Scriven BDS MSc MOrth MFDS



/drfrancisbraces

Lammas Field Pavilion, Cambridge CB3 9PA

T: 01223 305526 E: admin@drfrancisbraces.co.uk

Private Line: 07527 017386 www.drfrancisbraces.co.uk

Huntingdon NHS Treatment Centre, Hinchingsbrooke Park,
Huntingdon, Cambridgeshire PE29 6NT

Dental Services, Princess of Wales Hospital,
Lynn Road, Ely, Cambridgeshire
CB6 1DN